

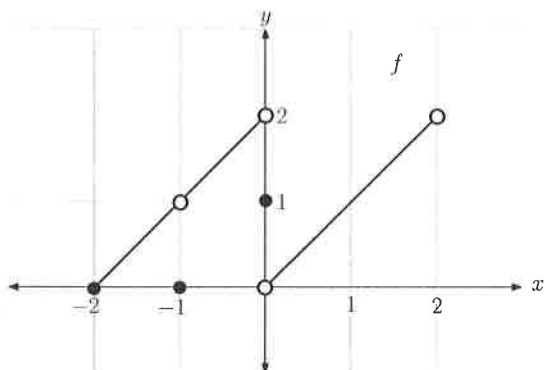
Score: _____ out of 10.

Math 201 - Quiz #1

Name: _____

key

1. Consider the graph of the given function $y = f(x)$ below.



(a) $f(-1) =$ 0

(b) $f(0) =$ 1

(c) $f(1) =$ 1

(d) Domain of f :

$[-2, 2]$

(e) Range of f :

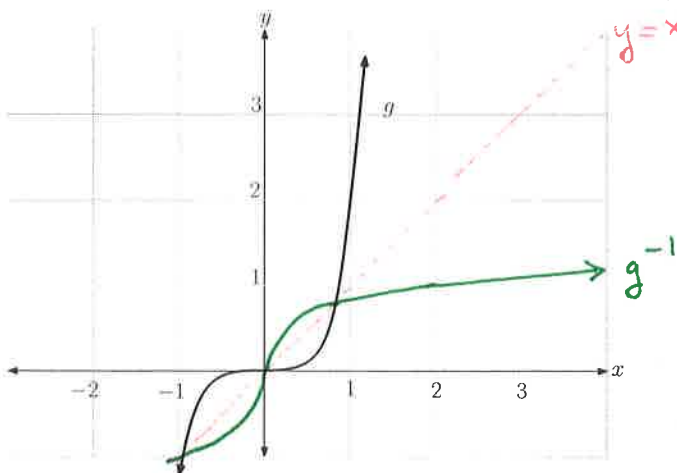
$[0, 2]$

(f) Is f injective (one-to-one)?

NO

(it does not pass the horizontal line test)

2. Consider the graph of the given bijective function $y = g(x)$ below.



- (a) Using the graph, how can we tell g is injective (one-to-one)?

the graph passes the horizontal line test.

(b) $g^{-1}(2) =$ 1

since $g(1) = 2$

- (c) Using the graph of $g(x)$ above sketch the graph of $g^{-1}(x)$. reflect along $y = x$

- (d) Without using the graph, what is the value of $(g \circ g^{-1})(2015) =$ 2015

these two reduce to the identity function:
Recall: $f(f^{-1}(x)) = x$ AND $f^{-1}(f(x)) = x$